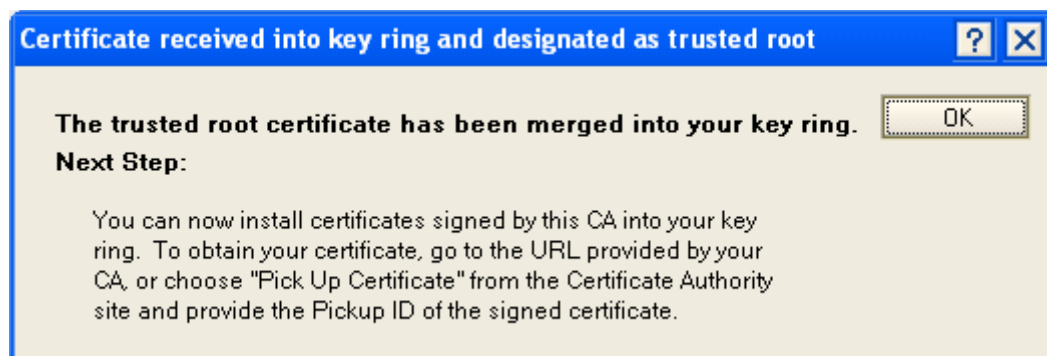


Now, you will get confirmation of a successful import.



You must repeat this process for every certificate in the chain. Please do not be confused by the term “root” as all root and intermediate certificates go in here. These must be done in a very specific order, as per below:

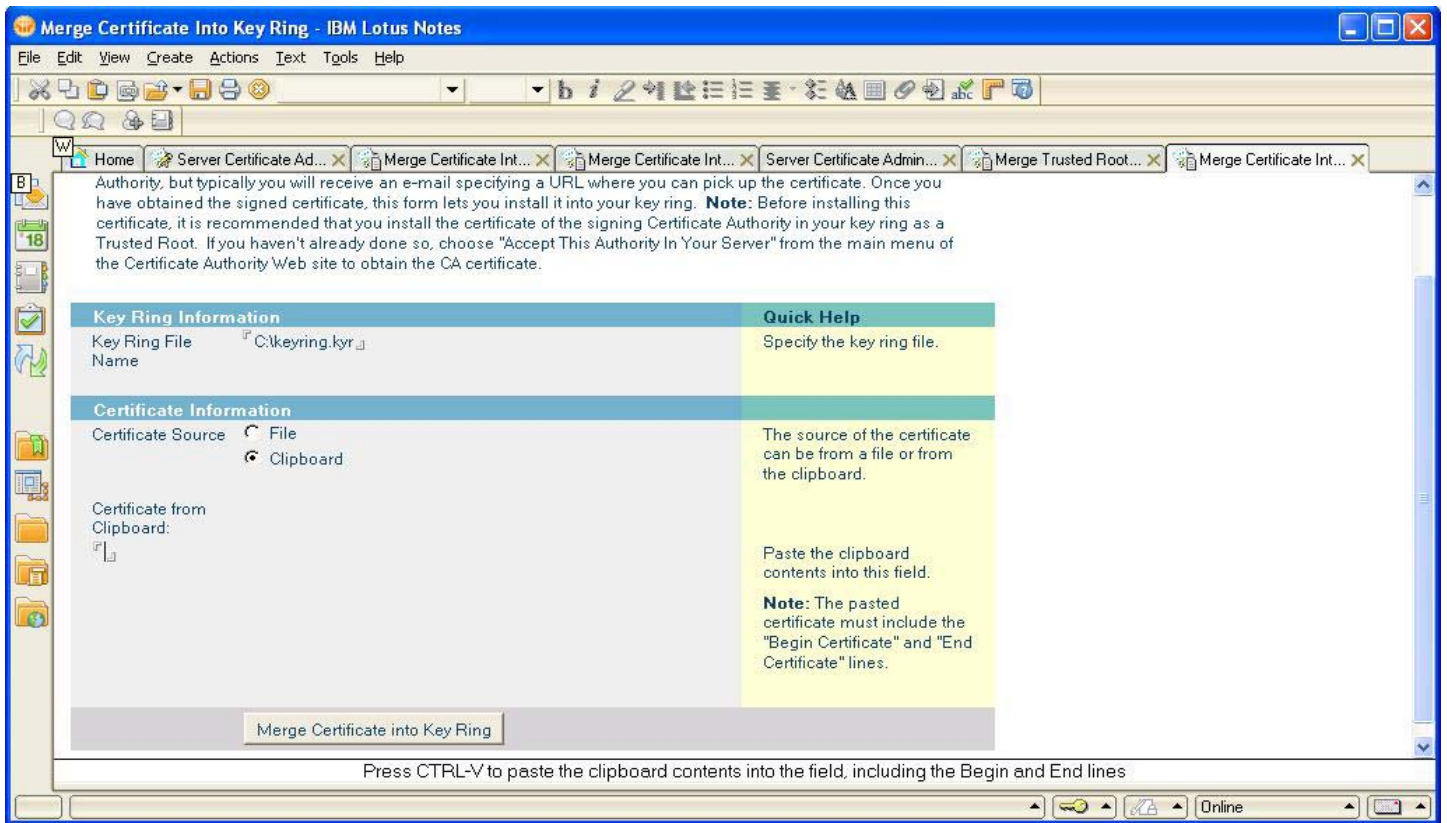
GlobalSign Root CA

GlobalSign Cross Certificate

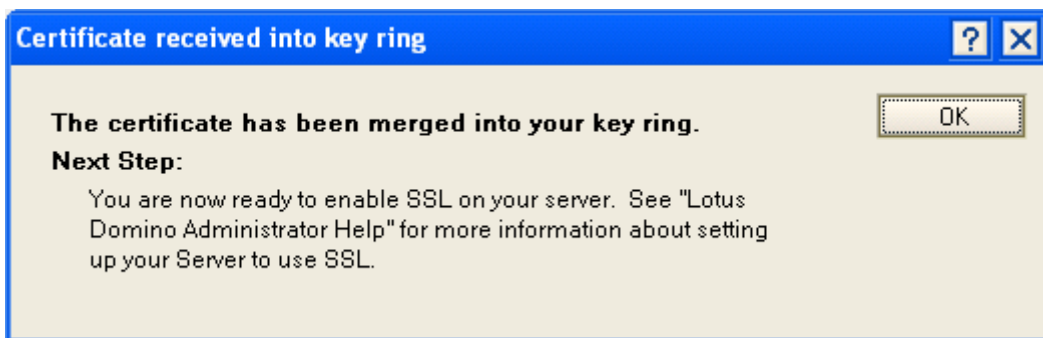
GlobalSign Intermediate Certificate

Once all of those certificates have been installed, you can then proceed to install the end entity certificate.

Click “Install Certificate into Key Ring”



When you hit “Merge Certificate into Key Ring”, you will get confirmation of a successful import.



You are now taken back to the main menu.

