

Quick Start User Guide - SafeNet Authentication Client

Installing the SAC utilities and drivers for Windows XP, Windows Vista, Windows 7 and Windows 8

Why are drivers and utilities necessary?

The Adobe Certificate Policy (CP) for the Adobe Certified Document Services (CDS) program requires that key material for compliant digital certificates are stored within a secure FIPS 140-2 level 2 environment. Where portability is needed SafeNet iKey USB tokens are provided. (Models supported by this user guide are iKey 2032, 4000 (SHA-1 signing) and 5100 (SHA-1 & SHA-256)).

In order for your Windows system to be able to use the key material and the various subordinate CA certificates in the hierarchy, you will need to ensure you follow the 3 stages highlighted below:-

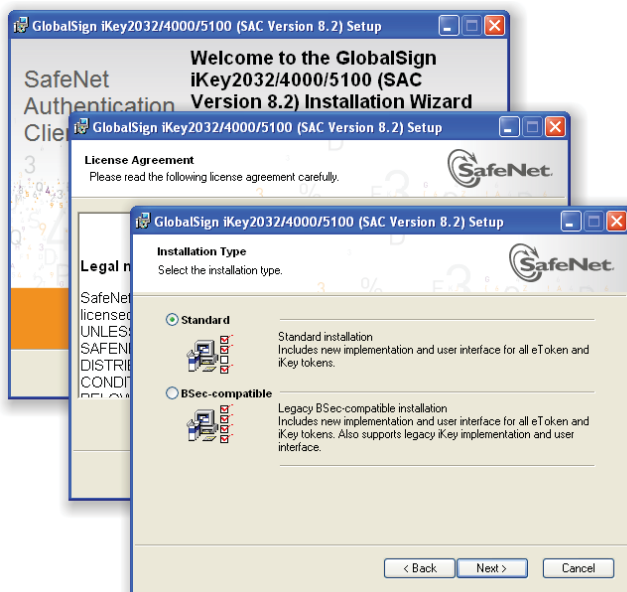
- Install the drivers
- Insert the token into your PC/Notebook and 'Initialise' it
- Follow the instructions on your 'pickup' email to create the key material and your digital certificates as well as installing the CA certificates

Stage 1 - Install the drivers and utilities

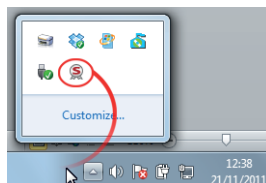
The latest drivers and compatibility information is located here:-

32 bit drivers: bit: <http://www.globalsign.com/support/adobe/32bit-safenet-driver.msi>

64 bit drivers: <http://www.globalsign.com/support/adobe/64bit-safenet-driver.msi>



Once installed you may click on the SafeNET logo in the task tray. Windows 7/8 users please note: If the icon does not appear on the task tray please drag it down to the tray by clicking on the task tray 'up' arrow to identify

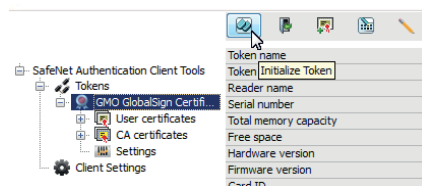


Stage 2 - Insert your token and initialise it

Once the utilities and drivers have been installed, insert your iKey token. The system will finish any final set-up and configuration processes and highlight when the token is available. As tokens are supplied 'blank' they need to be initialised prior to first use. Select the 'gear' icon and choose the initialise token option. Ensure you follow the on screen instructions to select a suitable password. (Please note that ONLY the latest iKey 5100 supports the 'administrator' password option).

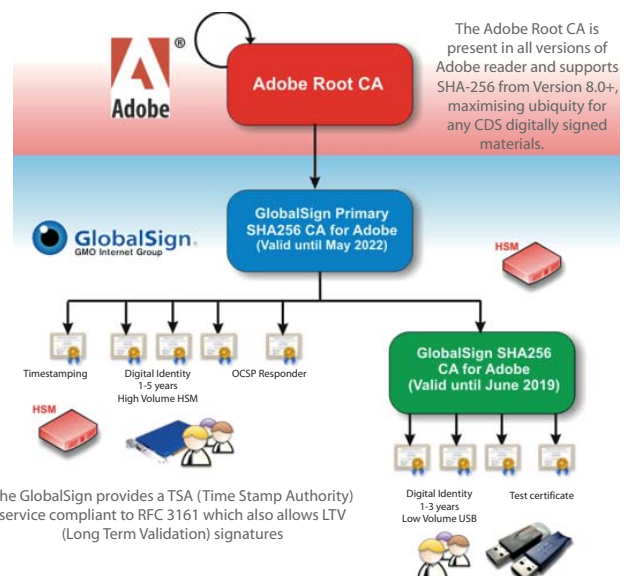
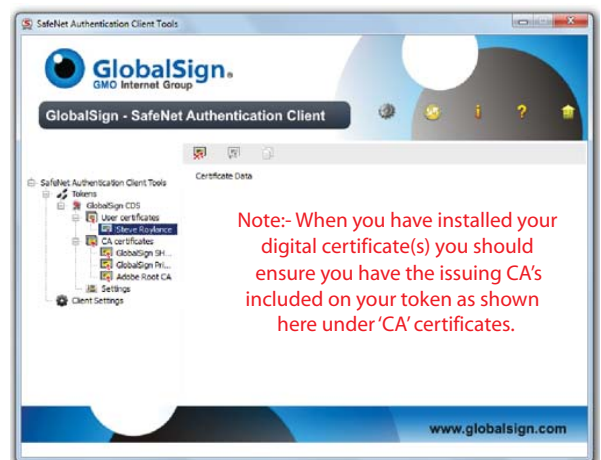
A full SafeNet Authentication Client Guide is located here:

<http://www.globalsign.com/support/adobe/safenet-token-userguide.pdf>



Stage 3 - Create and install your certificates

Follow the instructions in your 'pickup' email to create and install the key material and digital certificate(s). You can check the status of certificates on your token by clicking on the 'gear' icon.



For more information about GlobalSign solutions, please call UK +44 1622 766766 or Belgium +32 16 89 19 00

Visit www.globalsign.eu or www.globalsign.co.uk for more information